

Revo

Revo

Design Simone Viola

Materials Eco plastic, polypropylene, metal, fabric

Revo as revolutionary, innovative, which focuses on new paradigms and needs.

Revo as revolve, which allows you to rotate, turn around in complete freedom and to feel yourself the master of your own movement.

A simple, minimal word that embodies the soul of this collection made up of chair and stool.

Designed to meet new expectations and fit in an unprecedented way into realities such as smart offices.

In addition to a more traditional version with sled legs, the Revo collection features a model with casters which become invisible thanks to its lower base. This element also offers an indispensable support surface useful in all circumstances.

The handy and functional shape, as well as the reduced surface of its embracing backrest, have been designed to

allow extreme comfort and give that feeling of freedom, making the boundaries between you and Revo very blurred. The collection is completed by a revolving writing desk, whose arm and top can rotate on their own axis, making the seat highly suitable for community contexts.

The range of colours options also reflects Revo's adaptability. With its black lower base, the Revo collection offers five different chromatic options which make it perfect for all different tastes.

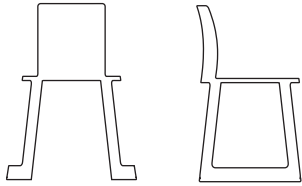
With this collection, made of eco plastic, a compound of organic waste materials, with low environmental impact, TOOU reconfirms its extreme sensitivity towards the environment. Not only that, the Revo collection, as they can be dismantled, allow a more efficient recycling of their components, thus concretizing an important eco-sustainability policy.



Revo

**Chair
TO-2010**

Indoor and outdoor use
Not stackable



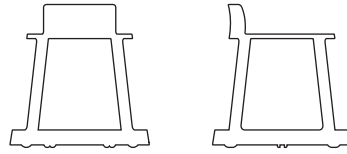
Dimensions (cm)
D45 W55 H75.5
SH44.5

Weight (kgs)
5.2

Material
Eco plastic.

**Stool with castor base
TO-2008/2009**

Indoor use only
Not stackable



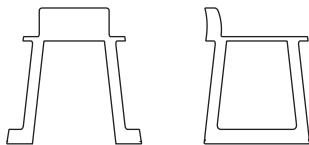
Dimensions (cm)
D55 W55 H58.5
SH46.5

Weight (kgs)
7.2

Material
Chair structure in eco plastic. Base in polypropylene.

**Stool
TO-2008**

Indoor and outdoor use
Not stackable



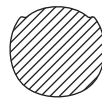
Dimensions (cm)
D45 W55 H56
SH44.5

Weight (kgs)
4.4

Material
Eco plastic.

**Upholstery
TO-2016**

Indoor use only



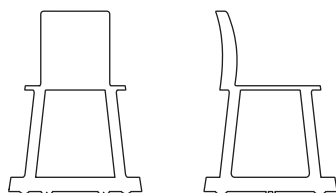
Dimensions (cm)
D39 W41

Weight (kgs)
0.8

Material
Polypropylene, upholstery foam and fabric.

**Chair with castor base
TO-2010/2009**

Indoor use only
Not stackable



Dimensions (cm)
D55 W55 H78
SH46.5

Weight (kgs)
8.0

Material
Chair structure in eco plastic. Base in polypropylene.

**Writing tablet
TO-2013**

Indoor use only
Not stackable



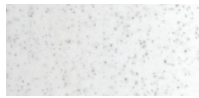
Dimensions (cm)
D27 W58.5 H35.5

Weight (kgs)
4.7

Material
Top in polypropylene. Arm in metal.

Revo colours & finishes

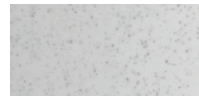
Structure



Eco white



Eco red
terracotta



Eco light gray



Eco mustard



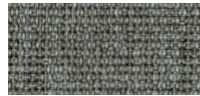
Eco anthracite

Upholstery Gabriel fabric

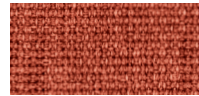
MEDLEY by **Gabriel**



Dark gray



Light gray



Red terracotta



Mustard

Castor base and writing tablet



Black