

Tasca

Tasca

Design Simone Viola

Materials Recycled plastic, polyurethane, metal,
eco leather/fabric

If you close your eyes and think of a lounge chair, in all likelihood you will imagine overly lavish interiors. Not anymore. Tasca is a collection with a refined but deliberately non-exclusive design: it stands out as a countertrend item, eliminating stereotypes and allowing everyone to have access to beauty. Conceived with a double function, for both private and public spaces, Tasca collection consists of a lounge and a footrest, characterized by a modern design and an irresistible and timeless elegance.

Sober and comfortable Tasca Collection makes every room welcoming and creates the perfect location to enjoy a moment of peace in which time flies imperceptibly. The lounge and the footrest form a unique collection thanks to the clever use of a single modular cushion in which lies the heart of the project, composed of elements in recycled materials. With its distinctive black metal base and fabric or eco leather upholstery, Tasca collection offers a range of options that makes it perfect for all tastes.



Tasca

Lounge chair
TO-1911/1912E-1902
Eco leather

TO-1911/1912G-1902
Gabriel fabric

TO-1911/1912S-1902
Standard fabric

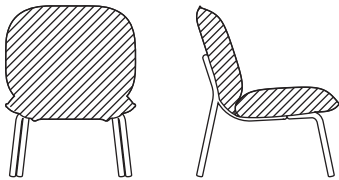
Indoor use only
 Not stackable

Ottoman
TO-1911E-1901
Eco leather

TO-1911G-1901
Gabriel fabric

TO-1911S-1901
Standard fabric

Indoor use only
 Not stackable



Dimensions (cm)
 D67 W61 H79

Weight (kgs)
 13

Dimensions (cm)
 D51 W61 H43

Weight (kgs)
 6.7

Material
 Cushion in upholstery foam, recycled plastic and fabric/PU. Base in powder coated metal.

Material
 Cushion in upholstery foam, recycled plastic and fabric/PU. Base in powder coated metal.

Pillow
TO-1913E
Eco leather

TO-1913G
Gabriel fabric

TO-1913G
Standard fabric

Indoor use only
 Not stackable



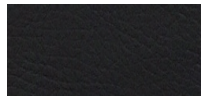
Dimensions (cm)
 D31 W35 H9

Weight (kgs)
 0.5

Material
 Upholstery foam and fabric/PU.

Tasca colours & finishes

Upholstery eco leather



Black



Cognac



Sand

Upholstery Gabriel fabric

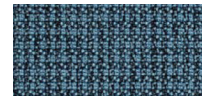
BAILEY by **Gabriel**



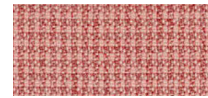
Gray



Anthracite



Blue

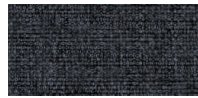


Pink

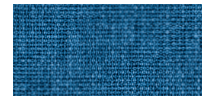
Upholstery standard fabric



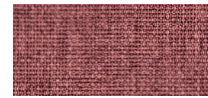
Gray



Anthracite



Blue



Pink

Metal base



Black